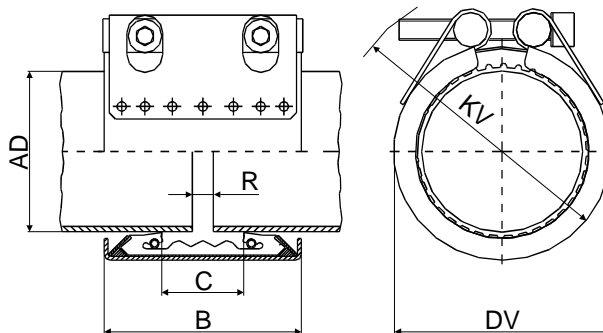


# Data sheet STRAUB-METAL-GRIP

## Axial restraint pipe joint up to 62 bar working pressure

Materials	W1	W2	W4	W5
<b>Components</b>				
Casing		AISI 304	AISI 304	
Screws		AISI 4135*	AISI 316	
Bolts		AISI 12L 14, galvanized	AISI 304	
Anchoring ring		AISI 301	AISI 301	
Strip insert (option)		AISI 316 L / PA/GF	AISI 316 L / PA/GF	
Sealing sleeve <b>EPDM</b>	Temp. : -30°C up to +100°C Medium : all qualities of water, waste water, air, solids and chemical products (chemical resistance on request)			
Sealing sleeve <b>NBR</b>	Temp. : -20°C up to +80°C Medium : water, gas, oil, fuel and other hydrocarbons			

### Versions in W2 or W4.



Pipe AD (mm)	Clamping range (mm)	Nominal pressure PN	Working pressure PB <sub>min</sub> (bar)	Dimensional data				Distance between pipe ends R <sub>max</sub> .		Locking bolts		
				B (mm)	C (mm)	assembled DV (mm)	KV (mm)	without strip insert (mm)	with strip insert (mm)	torque rate (Nm)	socket head	thread M ...
30.0	29.5 - 30.5	16	67	46/67	18	47	70	5	15	10	6	8
33.7	33.2 - 34.2	16	62	46/67	18	52	75	5	15	10	6	8
38.0	37.5 - 38.5	16	58	61	19	58	90	5	15	15	6	8
42.4	41.9 - 42.9	16	53	61	20	62	90	5	15	15	6	8
44.5	44.0 - 45.0	16	48	61	20	64	95	5	15	15	6	8
48.3	47.8 - 48.8	16	44	61	20	68	95	5	15	15	6	8
54.0	53.5 - 54.5	16	39	77	38	74	100	5	15	20	6	8
57.0	56.4 - 57.6	16	37	77	32	77	105	10	25	20	6	8
60.3	59.7 - 60.9	16	37	77	32	82	110	10	25	20	6	8
76.1	75.3 - 76.9	16	56	94	39	100	130	10	25	35	8	10
84.0	83.2 - 84.8	16	45	94	39	112	140	10	25	35	8	10
88.9	88.0 - 89.8	16	41	94	39	117	145	10	25	35	8	10
104.0	103.0 -105.0	16	37	94	39	133	160	10	25	35	8	10
108.0	106.9 -109.1	16	35	94	39	133	160	10	25	35	8	10
114.3	113.2 -115.4	16	34	94	39	139	165	10	25	35	8	10
129.0	127.7 -130.3	16	33	108	51	160	190	15	35	60	10	12
133.0	131.7 -134.3	16	33	108	43	160	190	15	30	60	10	12
139.7	138.3 -141.1	16	32	109	43	168	200	15	30	60	10	12
154.0	152.5 -155.5	16	32	109	51	186	215	15	35	60	10	12
159.0	157.4 -160.6	16	31	109	43	187	215	15	30	60	10	12
168.3	166.6 -170.0	16	29	109	43	200	230	15	30	60	10	12
219.1	216.9 -221.3	16	26	150	60	259	295	15	35	100	14	16

**Legend :** - W1 - W5 according to DIN Standard 86128 (ASTM F 1476 / F1548, ISO/NP-15837 / 15838). Right of alteration reserved.

- PB<sub>min</sub>: Working pressure considering the applications loads. Contact factory for higher working pressure.
- PN : Nominal pressure, includes four times safety factor, for applications that require authorisation of classification societies (e.g. shipbuilding).
- \* Property class 12.9, Dacromet 500 (zinc-chromate with integrated lubricant).

### Remarks:

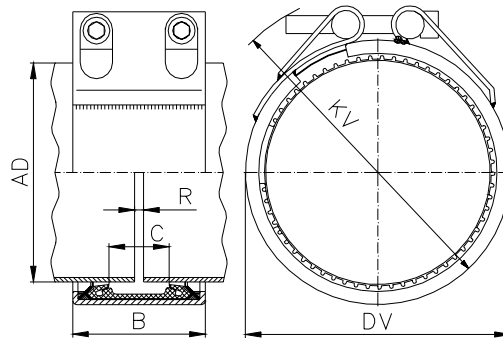
- Follow fitting / disassembly instructions.
- The pressure values are valid on radial rigid carbon steel pipes under static loads (contact factory for minimum wall-thickness of the pipe).
- Weight of the pipe joints see packing specifications.
- Strip insert are required when the gap between the pipe ends is excessive, in presence of swelling, at vacuum/depression (suction line), or external pressure. Strip inserts are available, under separate order, at additional costs.

**straub**

# Data sheet STRAUB-METAL-GRIP

Axial restraint pipe joint up to 27 bar working pressure

Components	Materials	W1	W2	W4	W5
Casing		AISI 1024, hot-dip galvanized			
Screws		AISI 4135*			
Bolts		AISI 12L 14, galvanized			
Anchoring ring		AISI 301			
Strip insert (option)		AISI 316 L / PA/GF			
Sealing sleeve <b>EPDM</b>		Temp. : -20°C up to +80°C Medium : all qualities of water, waste water, air, solids and chemical products (chemical resistance on request)			
Sealing sleeve <b>NBR</b>		Temp. : -20°C up to +80°C Medium : water, gas, oil, fuel and other hydrocarbons			



Pipe AD (mm)	Clamping range (mm)	Nominal pressure PN	Working pressure PB <sub>min</sub> (bar)	Dimensional data				Distance between pipe ends R <sub>max</sub> .		Locking bolts		
				B (mm)	C (mm)	assembled DV (mm)	KV (mm)	without strip insert (mm)	with strip insert (mm)	torque rate (Nm)	socket head	thread M ...
244.5	242.0 - 247.0	14	27	148	67	290	345	15	35	180	17	20
267.0	264.5 - 269.5	12	24	148	67	312	365	15	35	180	17	20
273.0	270.5 - 275.5	12	21	148	67	318	370	15	35	180	17	20
323.9	320.5 - 327.0	10	18	148	67	369	420	15	35	230	17	20
355.6	352.0 - 359.0	8	17	148	67	401	450	15	35	230	17	20
406.4	402.5 - 410.5	8	14	148	67	451	500	15	35	230	17	20
457.2	452.5 - 462.0	6	8	148	67	502	550	15	35	250	17	20
508.0	503.0 - 513.0	5	6	148	67	553	600	15	35	250	17	20
558.8	554.0 - 564.0	4.5	6	148	67	604	650	15	35	300	17	20
609.6	604.5 - 614.5	4	5	148	67	655	700	15	35	300	17	20

**Legend :** - W1 - W5 according to DIN Standard 86128 (ASTM F 1476 / F1548, ISO/NP-15837 / 15838). Right of alteration reserved.

- PB<sub>min</sub>: Working pressure considering the applications loads. Contact factory for higher working pressure.
- PN : Nominal pressure, includes four times safety factor, for applications that require authorisation of classification societies (e.g. shipbuilding).

\* Property class 12.9, Dacromet 500 (zinc-chromate with integrated lubricant).

**Remarks:**

- Follow fitting / disassembly instructions.
- The pressure values are valid on radial rigid carbon steel pipes under static loads (contact factory for minimum wall-thickness of the pipe).
- Weight of the pipe joints see packing specifications.
- Strip insert are required when the gap between the pipe ends is excessive, in presence of swelling, at vacuum/depression (suction line), or external pressure. Strip inserts are available, under separate order, at additional costs.

**straub**

**the original**