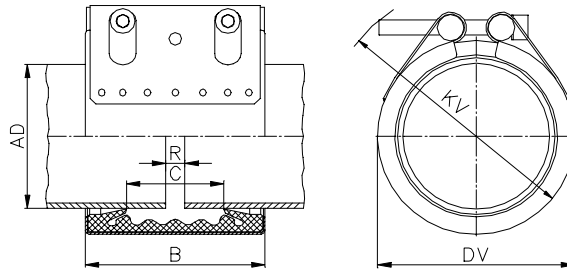


Data sheet STRAUB-FLEX 1L

Pipe joint without axial restraining for all pipe materials

Materials	W1	W2	W4	W5
Components				
Casing		AISI 316 Ti		AISI 316 Ti
Screws		AISI 4135*		AISI 316 L
Bolts		AISI 12L 14, galvanized		AISI 316 L
Strip insert (option)		AISI 316 L PA/GF from 127 mm HDPE		AISI 316 L PA/GF from 127 mm HDPE
Sealing sleeve EPDM	Temp.: -20°C up to +80°C Medium: all qualities of water, waste water, air, solids and chemical products			
Sealing sleeve NBR	Temp.: -20°C up to +80°C Medium: water, gas, oil, fuel and other hydrocarbons			
Chemical resistance of sealing sleeve on request.				
Versions in W2 or W5.				



AD (mm)	Clamping range (mm)	Nominal pressure PN (bar)	Working pressure PB _{min} (bar)	Dimensional data				Setting gap between pipe ends R _{max}		Locking bolts		
				B (mm)	C (mm)	DV (mm)	KV (mm)	without Strip insert (mm)	with	torque rate (Nm)	socket head (mm)	thread M...
48.3	47.0 - 49.5	16	25	75	35	70	85	5	15	7.5	6	8
54.0	52.5 - 55.5	16	25	75	35	76	90	5	15	7.5	6	8
57.0	55.5 - 58.5	16	25	75	35	79	95	5	15	7.5	6	8
60.3	59.0 - 61.5	16	25	75	35	82	95	5	15	7.5	6	8
73.0	71.5 - 74.5	16	25	94	51	95	110	5	25	7.5	6	8
76.1	74.5 - 77.5	16	25	94	51	98	115	5	25	7.5	6	8
84.0	82.5 - 85.5	16	24	94	51	106	120	5	25	7.5	6	8
88.9	87.5 - 90.5	16	24	94	51	111	125	5	25	7.5	6	8
100.6	99.0 - 102.5	16	23	94	51	123	140	5	25	7.5	6	8
101.6	100.0 - 103.5	16	23	94	51	124	140	5	25	7.5	6	8
104.0	102.5 - 105.5	16	22	94	51	126	140	5	25	7.5	6	8
104.8	103.0 - 106.5	16	22	94	51	127	140	5	25	7.5	6	8
108.0	106.5 - 109.5	16	22	94	51	130	145	5	25	7.5	6	8
114.3	112.5 - 116.0	16	21	94	51	136	150	5	25	7.5	6	8
127.0	125.0 - 129.0	16	19	107	62	149	165	5	35	10	8	10
129.0	127.0 - 131.0	16	18	107	62	151	165	5	35	10	8	10
130.2	128.5 - 132.0	16	18	107	62	152	165	5	35	10	8	10
133.0	131.0 - 135.0	16	16	107	62	155	170	5	35	10	8	10
139.7	138.0 - 141.5	16	16	107	62	162	175	5	35	10	8	10
141.3	139.5 - 143.0	16	16	107	62	163	180	5	35	10	8	10
154.0	152.0 - 156.0	16	16	107	62	176	190	5	35	10	8	10
159.0	157.0 - 161.0	16	16	107	62	181	195	5	35	10	8	10
168.3	166.0 - 170.5	16	16	107	62	190	205	5	35	10	8	10

Right of alteration reserved.

- Legend:**
- W1 - W5 according to DIN Standard 86128 (ASTM F 1476 / F1548, ISO/NP-15837 / 15838).
 - * Property class 12.9, Dacromet 500 (zinc-chromate with integrated lubricant).
 - PB_{min}: Working pressure considering the applications loads.
 - Nominal pressure, includes four times safety factor, for applications that require authorisation of classification societies (e.g. ABS, DNV, etc.).

- Remarks:**
- Follow fitting / disassembly instructions.
 - Admissible **maximum axial movement** of the pipes Δl : 5 mm.
 - Weight of the pipe joints see packing specifications.
 - Strip insert are required when the gap between the pipe ends is excessive, in presence of swelling, at vacuum/depression (suction line), or external pressure. Strip inserts are available, under separate order, at additional costs.

straub
the original