



Fast, easy, practical – STRAUB-OPEN-FLEX® 1L GT

Areas of application STRAUB-OPEN-FLEX® 1L GT

For example:

- sampling
- drainage
- venting



... or as a measuring-point for

- pressure
- temperature
- flow rate
- operating checks



... or as a pre-configured connection for:

- additional loads
- plant extension
- additional workplaces, etc.



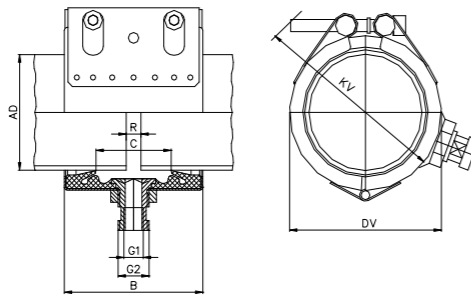
Remarks:

- Subject to technical alterations
- In order to illustrate the wide-ranging application potential, some of the images on the data sheet comprise the **STRAUB-METAL-GRIP-GT**.
- Also available as **STRAUB-OPEN-FLEX 2L GT** on request



Data sheet STRAUB-OPEN-FLEX 1L GT
Pipe coupling with joint and outlet socket
Non axial restraint pipe coupling for all pipe materials

Components / Materials	W1	W2	W4	W5
Casing		1.4571 (V4A) / 1.4301 (V2A)		1.4571 (V4A)
Screws		1.7220 ⁰		1.4404 / 1.4435 (V4A)
Bolts		1.0737, galvanised		1.4404 / 1.4435 (V4A)
Strip insert (optional)		unavailable		unavailable
Sealing collar EPDM	Temp.: -20°C to +70°C Medium: all qualities of water, wastewater, air, solids, and chemical products			
Sealing collar NBR	Temp.: -20°C to +70°C Medium: water, gases, oil, fuel (solid, liquid or gaseous) as well as other hydrocarbons			



Pipe OD (mm)	Clamping range (mm)	Nominal pressure PS (bar)	Type		Dimension				Setting gap between pipe ends R _{max}	Locking bolts		
			G1	G2	B (mm)	C (mm)	DV (mm)	KV (mm)		Torque rate (Nm)	Allen head (mm)	Thread M...
73.0	71.5 – 74.5	16	¼"	½"	94	51	95	110	5	10	6	8
76.1	71.5 – 74.5	16	¼"	½"	94	51	98	115	5	10	6	8
84.0	82.5 – 85.5	16	¼"	½"	94	51	106	120	5	10	6	8
88.9	87.5 – 90.5	16	¼"	½"	94	51	111	125	5	10	6	8
100.6	99.0 – 102.5	16	¼"	½"	94	51	123	140	5	10	6	8
101.6	100.0 – 103.5	16	¼"	½"	94	51	124	140	5	10	6	8
104.0	102.5 – 105.5	16	¼"	½"	94	51	126	140	5	10	6	8
104.8	103.0 – 106.5	16	¼"	½"	94	51	127	140	5	10	6	8
108.0	106.5 – 109.5	16	¼"	½"	94	51	130	145	5	10	6	8
114.3	112.5 – 116.0	16	¼"	½"	94	51	136	150	5	10	6	8
127.0	125.0 – 129.0	16	¾"	1"	107	62	149	165	5	12	8	10
129.0	127.0 – 131.0	16	¾"	1"	107	62	151	165	5	12	8	10
130.2	128.5 – 132.0	16	¾"	1"	107	62	152	165	5	12	8	10
133.0	131.0 – 135.0	16	¾"	1"	107	62	155	170	5	12	8	10
139.7	138.0 – 141.5	16	¾"	1"	107	62	162	175	5	12	8	10
141.3	139.5 – 143.0	16	¾"	1"	107	62	163	180	5	12	8	10
154.0	152.0 – 156.0	16	¾"	1"	107	62	176	190	5	12	8	10
159.0	157.0 – 161.0	16	¾"	1"	107	62	181	195	5	12	8	10
168.3	166.0 – 170.5	16	¾"	1"	107	62	190	205	5	12	8	10

Legend: - W1–W5 is according to DIN Standard 86128 (ASTM F1476 / F1548, ISO/NP-15837 / 15838).
⁰ Property class 12.9, Dacromet 500 (zinc-chromate with integrated lubricant).

Remarks: - Follow fitting/disassembly instructions.
 - Test pressure = 1.5 x nominal pressure PS
 - Admissible **maximum axial movement** of the pipes: 5 mm
 - Strip inserts cannot be fitted on all couplings with outlets.
 - **STRAUB-OPEN-FLEX 2LGT on request (outlet G1: ¼" G2: 1")**
 - Weight: 73.0 – 114.3 mm = OPEN-FLEX 1L + 0.2 kg / 114.3 – 168.3 mm = OPEN-FLEX 1L + 0.3 kg

STRAUB-OPEN-FLEX® 1L GT

We present non axial restraint pipe connection, compensator, and distributor in one in the form of the **STRAUB-OPEN-FLEX 1L GT**.



The **STRAUB-OPEN-FLEX 1L GT** connects any metal pipe without the need to adapt the pipe ends. It is light, space-saving, and has good damping properties. This makes it the right pipe coupling for construction and civil engineering, supply and disposal as well as for industrial pipeline construction.

The **STRAUB-OPEN-FLEX 1L GT** combines all the advantages of the well-known original with the added benefit of a lateral outlet. Further benefits and a wide range of applications also exist thanks to this additional outlet.

Connection possibilities

Threaded fittings and STRAUB pipe couplings or any other type of pipe connection such as press fitting, welding nipples, etc.



Installation STRAUB-OPEN-FLEX 1L GT



Note: Our **STRAUB-METAL-GRIP** is also available in the GT-version.