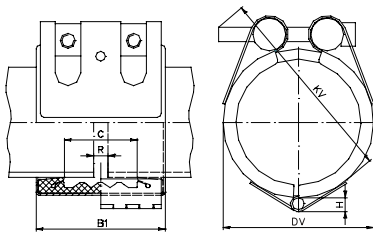


Specification STRAUB-OPEN-FLEX 1L Ø 48.3 – 168.3 mm

Components / Materials	W1	W2	W4	W5
Casing		AISI 304/316 Ti		AISI 316 Ti
Screws		AISI 4135 ^o		AISI 316 L
Bolts		AISI 12L 14, galvanized		AISI 316 L
Strip insert (option)		AISI 316 L / PVDF from 180 mm HDPE		AISI 316 L / PVDF from 180 mm HDPE
Sealing sleeve	Temp.: -20°C up to +80°C			
EPDM	Medium: all qualities of water, waste water, air, solids and chemical products			
Sealing sleeve	Temp.: -20°C up to +80°C			
NBR	Medium: water, gas, oil, fuel and other hydrocarbons			



Hinge (H) = OD 48.3 – 60.3: 7.0 mm
 OD 73.0 – 114.3: 9.0 mm
 OD 127.0 – 168.3: 9.5 mm

Pipe OD (mm)	Clamping range (mm)	Nominal pressure PN (bar)	Dimensional data				Setting gap between pipe ends R _{max}		Locking bolts		
			B (mm)	C (mm)	DV (mm)	KV (mm)	without strip insert (mm)	with (mm)	torque rate (Nm)	allen head (mm)	thread M...
48.3	47.0 - 49.5	16	75	35	70	85	5	15	7.5	6	8
54.0	52.5 - 55.5	16	75	35	76	90	5	15	7.5	6	8
57.0	55.5 - 58.5	16	75	35	79	95	5	15	7.5	6	8
60.3	59.0 - 61.5	16	75	35	82	95	5	15	7.5	6	8
73.0	71.5 - 74.5	16	94	51	95	117	5	25	10	6	8
76.1	74.5 - 77.5	16	94	51	98	122	5	25	10	6	8
84.0	82.5 - 85.5	16	94	51	106	127	5	25	10	6	8
88.9	87.5 - 90.5	16	94	51	111	132	5	25	10	6	8
100.6	99.0 - 102.5	16	94	51	123	147	5	25	10	6	8
101.6	100.0 - 103.5	16	94	51	124	147	5	25	10	6	8
104.0	102.5 - 105.5	16	94	51	126	147	5	25	10	6	8
104.8	103.0 - 106.5	16	94	51	127	147	5	25	10	6	8
108.0	106.5 - 109.5	16	94	51	130	152	5	25	10	6	8
114.3	112.5 - 116.0	16	94	51	136	157	5	25	10	6	8
127.0	125.0 - 129.0	16	107	62	149	165	5	35	12	8	10
129.0	127.0 - 131.0	16	107	62	151	165	5	35	12	8	10
130.2	128.5 - 132.0	16	107	62	152	165	5	35	12	8	10
133.0	131.0 - 135.0	16	107	62	155	170	5	35	12	8	10
139.7	138.0 - 141.5	16	107	62	162	175	5	35	12	8	10
141.3	139.5 - 143.0	16	107	62	163	180	5	35	12	8	10
154.0	152.0 - 156.0	16	107	62	176	190	5	35	12	8	10
159.0	157.0 - 161.0	16	107	62	181	195	5	35	12	8	10
168.3	166.0 - 170.5	16	107	62	190	205	5	35	12	8	10

Legend:

- W1-W5 according to DIN Standard 86128 (ASTM F1476 / F1548, ISO/NP-15837 / 15838).
- ^o Property class 12.9, Dacromet 500 (zinc-chromate with integrated lubricant).

Remarks:

- Follow fitting / disassembly instructions.
- Test pressure = 1,5 x PN.
- **Admissible maximum axial movement of the pipes: 5 mm.**
- Weight of the coupling see separate packing specifications.
- Strip insert is required when gap between pipe ends is excessive, in presence of swelling, vacuum/depression (suction line), or external pressure. Strip inserts are available, under separate order, at additional costs.